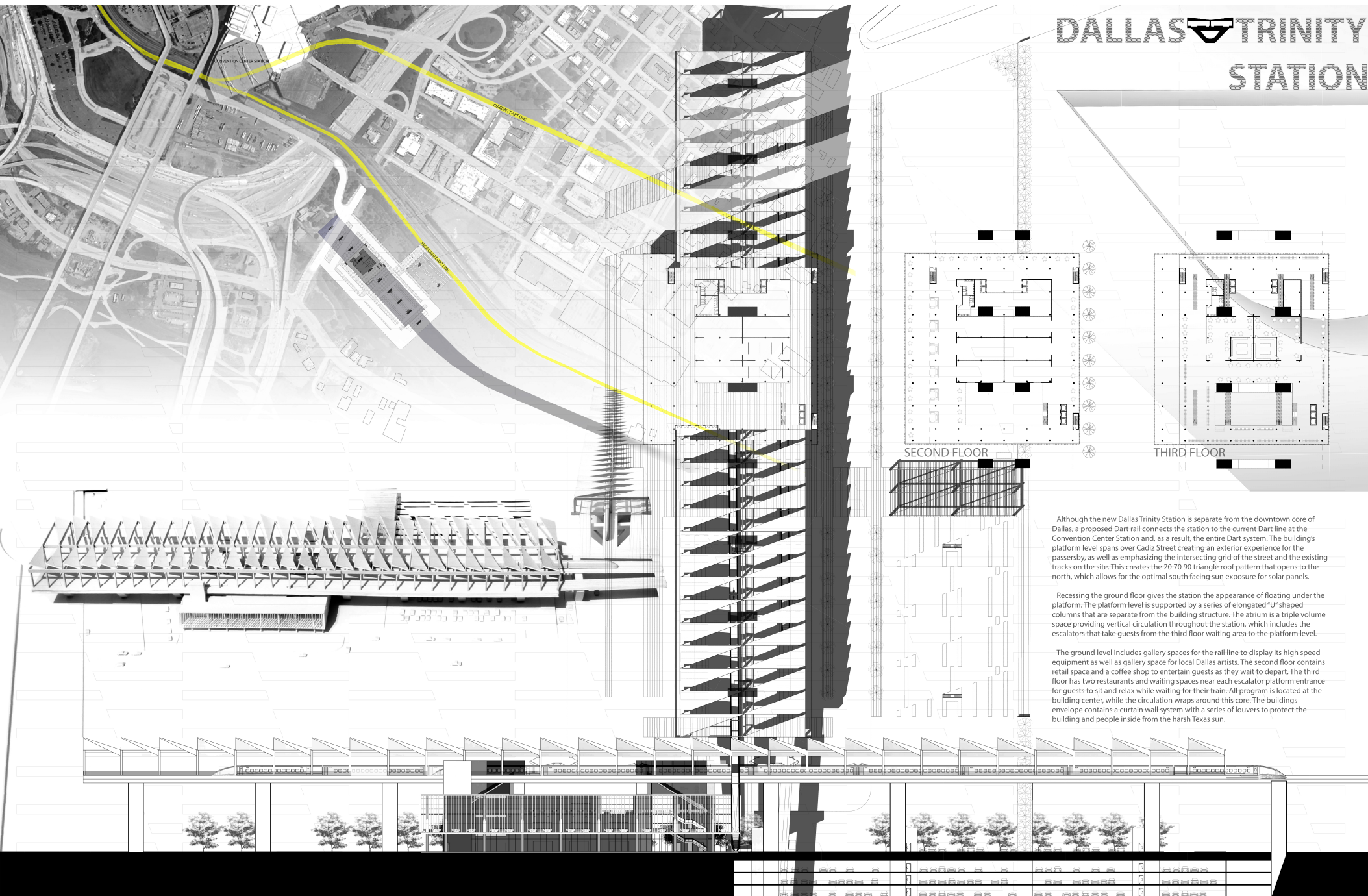


# DALLAS TRINITY STATION



SECOND FLOOR

THIRD FLOOR

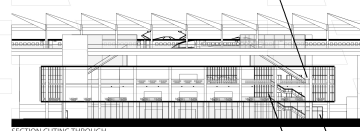
Although the new Dallas Trinity Station is separate from the downtown core of Dallas, a proposed Dart rail connects the station to the current Dart line at the Convention Center Station and, as a result, the entire Dart system. The building's platform level spans over Cadiz Street creating an exterior experience for the passersby, as well as emphasizing the intersecting grid of the street and the existing tracks on the site. This creates the 20 70 90 triangle roof pattern that opens to the north, which allows for the optimal south facing sun exposure for solar panels.

Recessing the ground floor gives the station the appearance of floating under the platform. The platform level is supported by a series of elongated "U" shaped columns that are separate from the building structure. The atrium is a triple volume space providing vertical circulation throughout the station, which includes the escalators that take guests from the third floor waiting area to the platform level.

The ground level includes gallery spaces for the rail line to display its high speed equipment as well as gallery space for local Dallas artists. The second floor contains retail space and a coffee shop to entertain guests as they wait to depart. The third floor has two restaurants and waiting spaces near each escalator platform entrance for guests to sit and relax while waiting for their train. All program is located at the building center, while the circulation wraps around this core. The building's envelope contains a curtain wall system with a series of louvers to protect the building and people inside from the harsh Texas sun.



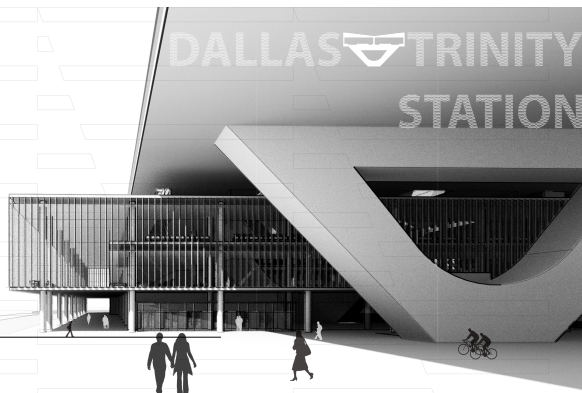
3RD FLOOR LOOKING INTO ATRIUM



SECTION CUTTING THROUGH DOUBLE VOLUME CIRCULATION

MAIN ENTRANCE

2ND FLOOR LOOKING INTO DOUBLE VOLUME CIRCULATION AND WEST FACADE



20 70 90 TRIANGULAR SHADE SOUTH FACING SOLAR PANELS

STRUCTURE FOR PLATFORM ROOF

PLATFORM LEVEL

CADIZ STREET

BUILDING ROOF SPACE BETWEEN BUILDING AND PLATFORM

SEPARATE STRUCTURE FOR PLATFORM LEVEL

LIFTLIFT SYSTEM

